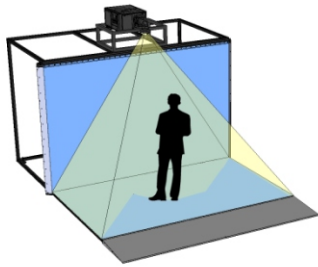


VisCube C2-4KU™

CAVE Immersive 3D Display



The **VisCube C2-4KU™** is a high resolution immersive virtual reality system. It features a rear-projection wall and a front projected floor. The 12' wide front wall and floor allow more viewers in the space than a standard 10' wide configuration. The VisCube C2-4KU is configured as a turn-key immersive virtual reality system, complete with a tracking system and graphics workstation. See datasheet below.

The VisCube C2-4KU features a **laser light source**, providing stable color and eliminating lamp changes. The VisCube C2-4KU is similar in layout to the popular VisCube C2 except with almost 4 times the resolution.

VisCube C2-4KU Datasheet



System Specifications

- Resolution: 3840x2400 per surface
 - Screens: walls and floor
 - Screen size: 144" w x 90" h per surface (3.66m x 2.29m)
 - Footprint: 12.0' w x 17' d x 10.5' h (3.66m x 5.14m x 3.13m)
- Includes:
- 2 active stereo 4K UHD projectors (3840x2400, 15k lumens)
 - Laser light source: stable color, no lamp changes
 - Free-standing aluminum structure with front-surface mirrors
 - Raised floor surface
 - Custom projector positioners
 - Active stereo and 10 pairs of shutter glasses
 - Video, projector control, projector sync, and power cabling
 - Installed and calibrated on-site by Visbox, Inc.



A.R.T. Optical Tracking

- ARTTRACK5 system (4 high resolution cameras)
- Tracked head, tracked wand



Image Generator

- Graphics workstation with NVIDIA Quadro graphics
- 19" APC rack and all cabling
- Control console with monitor/keyboard/mouse
- Software demos, applications, and development libraries



Sound System

- Soundbar and subwoofer



Option: Surround Sound System

- 5.1 Surround speakers: 5 satellite, subwoofer
- 5.1 Surround system processor/amplifier



Option: MiddleVR for Unity

- Run Unity applications in the VisCube

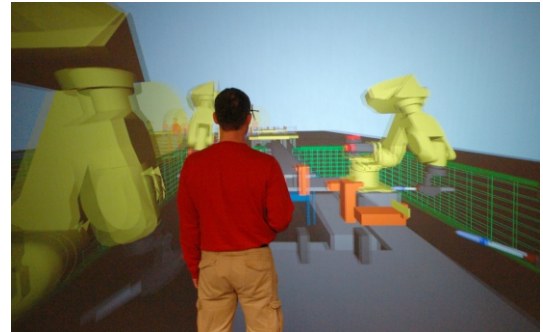


Option: DEP (dual eyepoint)

- 240hz display allowing for two separate 3D viewpoints
- Resolution decreases to 2560x1600 per surface when enabled

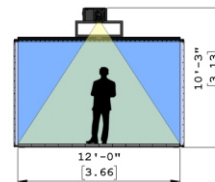
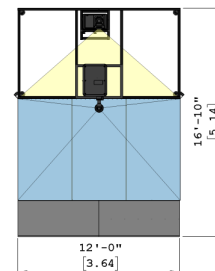
Key Features:

- High resolution CAVE VR system
- Multi-screen Immersion: wall and floor
- Large **12' wide** front wall allows more viewers
- **4K UHD (3840x2400) resolution**
- **Laser light source:** stable color, no lamp changes
- Multi-use: mono, stereo 3D, tracked stereo 3D (VR)
- **DEP option:** 240hz allowing 2 separate 3D viewpoints
- Custom configurations available



Multi-Screen Applications

The VisCube provides a high level of immersion using multiple life-size 3D display surfaces surrounding the user. With the addition of head tracking, virtual objects appear at human scale and users can manipulate their perspective with natural head movements. This ability to look in, out, and around virtual objects enhances the ability to visualize many types of data.



Other VisCube Models

- VisCube M4, M5: 12' wide, 2560x1600
- VisCube C1, C2, C4: 12' wide, 2560x1600
- VisCube C4-T2: 10' wide, 2840x2560
- VisCube C4-T3: 12' wide, **4096x2560**
- VisCube C4-T3X: 13' wide, **6000x4096**

Information in this brochure is subject to change without any notice. For up-to-date information and to learn more about Visbox, Inc.'s various products and services, please visit our website at:

www.visbox.com

Contact Us:

Visbox, Inc.
304 Northgate Drive
St. Joseph, IL 61873 USA

www.visbox.com
sales@visbox.com
1-217-469-2020