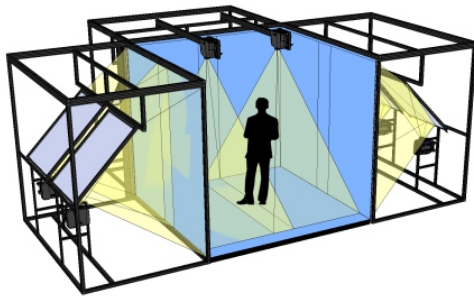


# VisCube C4-T2X™

## CAVE Immersive 3D Display

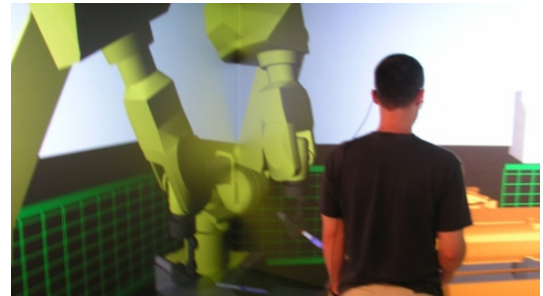


The **VisCube C4-T2X™** is a **tall and high-resolution** CAVE immersive virtual reality system. It features three 10' x 10' rear-projection walls and a front projected floor. The VisCube C4-T2X is configured as a turn-key immersive virtual reality system, complete with a tracking system and graphics workstation. See datasheet below.

The **VisCube C4-T2X** is **compact and can be installed in small spaces**. It requires 11' of ceiling height.

### Key Features:

- **Tall and high resolution** CAVE VR system
- **Compact footprint** fits into small spaces
- Multi-screen Immersion: 3 walls and a floor
- **Large 10'x10' screens**
- **4096x4096 resolution per surface**
- **Laser light source:** stable color, no lamp changes
- Multi-use: mono, stereo 3D, tracked stereo 3D (VR)
- High framerate (240hz) **dual-view** (2 separate 3D views)
- Custom configurations available



## VisCube C4-T2X Datasheet



### System Specifications

- Resolution: 4096x4096 per screen
- Screens: 3 walls + 1 floor
- Screen size: 120" w x 120" h (3.05m x 3.05m)
- Footprint: 24.5' w x 17' d x 11' h (7.17m x 5.17m x 3.35m)

#### Includes:

- 8 active stereo projectors (4096x2160)
- Laser light source: stable color, no lamp changes
- Digital edge blending
- Free-standing aluminum structure with front-surface mirrors
- Raised floor surface, custom projector positioners
- Active stereo and 10 pairs of glasses
- Video, projector control, projector sync, and power cabling
- Installed and calibrated on-site by Visbox, Inc.



### A.R.T. Optical Tracking

- ARTTRACK5 system (4 high resolution cameras)
- Tracked head, tracked wand (controller)



### Image Generator

- Graphics workstation with NVIDIA Quadro graphics
- 19" APC rack and all cabling
- Control console with monitor/keyboard/mouse
- Software demos, applications, and development libraries



### Sound System

- Soundbar and subwoofer



### Option: Surround Sound System

- 5.1 Surround speakers: 5 satellite, subwoofer
- 5.1 Surround system processor/amplifier



### Option: MiddleVR for Unity

- Run Unity applications in the VisCube

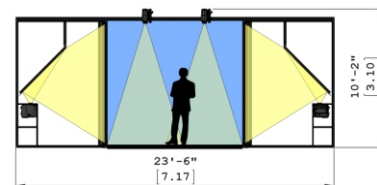
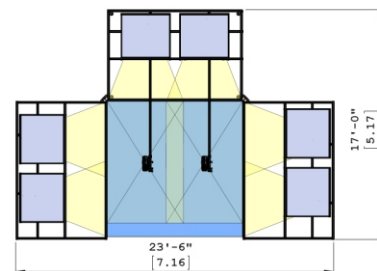


### Option: Dual-View

- Special 3D glasses (240hz) to allow for 2 separate 3D views

### Multi-Screen Applications

The VisCube provides a high level of immersion using multiple life-size 3D display surfaces surrounding the user. With the addition of head tracking, virtual objects appear at human scale and users can manipulate their perspective with natural head movements. This ability to look in, out, and around virtual objects enhances the ability to visualize many types of data.



### Other VisCube Models

- VisCube M4, M5: 12' wide, 1920x1200
- VisCube C1, C2, C4: 12' wide, 1920x1200
- VisCube C4-4KU: 12' wide, **3840x2400**
- VisCube C4-T3X: 13' wide, **6000x4096**
- VisCube LED: **bright, seamless, scalable**

Information in this brochure is subject to change without any notice. For up-to-date information and to learn more about Visbox, Inc.'s various products and services, please visit our website at:

[www.visbox.com](http://www.visbox.com)

### Contact Us:

Visbox, Inc.  
304 Northgate Drive  
St. Joseph, IL 61873 USA

[www.visbox.com](http://www.visbox.com)  
[sales@visbox.com](mailto:sales@visbox.com)  
1-217-469-2020